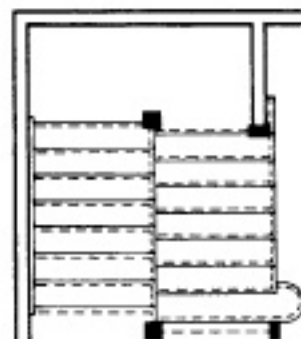
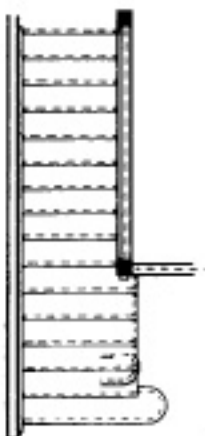


Full Open Straight Stair with Bullnose, 16 Rise, 48" wide, 10' balcony

- 1 Volute Newel
- 1 Volute
- 26LF Handrail 1/16 and 1/10
- 5 39" baluster under volute
- 14 34" balusters on stair
- 14 36" balusters on stair
- 20 36" balusters on level balcony
- 1 Full newel, 48"
- 1 Half newel, 48"
- 1 1 Riser Gooseneck
- 10LF 5 1/4" Landing Tread
- 1 Shoe Mould Kit

Partial Open Straight Stair with Bullnose, 7 Rise partial open, 16 riser total, 7' and 9' balcony

- 1 Volute Newel
- 1 Volute
- 32LF Handrail 2/16
- 5 39" volute baluster
- 5 34" balusters on stair
- 5 36" balusters on stair
- 32 36" balusters on level balcony
- 2 Full newels, 48"
- 2 Half newels, 48"
- 1 1 Riser Gooseneck
- 16LF 5 1/4" Landing Tread
- 3 Handrail brackets
- 1 Shoe Mould Kit
- 1 1—Riser Gooseneck



Split-flight Full Open Scissors Stair with Bullnose, 16 Rise, 10' balcony

- 1 Volute Newel
- 1 Volute
- 26LF Handrail 1/16 and 1/10
- 5 39" baluster under volute
- 13 34" balusters on stair
- 13 36" balusters on stair
- 20 36" balusters on level balcony
- 2 Full newels, 48"
- 2 Half newels, 48"
- 1 1 Riser Gooseneck
- 10LF 5 1/4" Landing Tread
- 1 Shoe Mould Kit
- 1 —Riser Gooseneck

The diagrams on this page are provided as a guideline which may help you plan your new staircase and estimate the stair parts needed and cost.

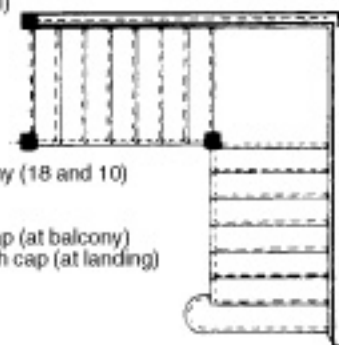
Interior Trim & Supply, Inc. can not be held responsible for maintaining Code Requirements for your area.

Full L-Stair with Bullnose, 16 Rise, 48" wide, 9' + 5' balcony (figured for continuous rail)

- 1 Volute Newel
- 1 Volute
- 28LF Handrail 2/14
- 5 39" baluster under volute
- 14 34" balusters on stair
- 14 36" balusters on stair
- 28 36" balusters on level balcony (18 and 10)
- 3 Full newels, 43" pin top
- 2 Half newels, 48"
- 1 1—Riser Gooseneck with cap (at balcony)
- 1 1—Riser LH Gooseneck with cap (at landing)
- 14LF 5 1/4" Landing Tread
- 1 Opening cap
- 1 Shoe Mould Kit

Curved Stair with Bullnose, 16 Rise, 15' curved balcony

- 1 Volute Newel
- 1 Volute
- 2 16" Bending Rail and Mould
- 5 39" baluster under volute
- 14 34" balusters on stair
- 14 36" balusters on stair
- 30 36" balusters on level balcony
- 2 Full newels, 48"
- 2 Half newels, 48"
- 1 1—Riser Gooseneck
- 15LF 5 1/4" Landing Tread



**Baluster:** one of the upright spindles which supports the handrail.

**Box Newel:** a newel post that is assembled rather than turned from solid pieces of wood and suitable for use with all balusters.

**Volute:** a more attractive alternative to the extra long newel post. Volutes are used in conjunction with radius starting steps.

**Closed Tread:** a tread which is installed between two walls.

**Cove Mould:** used to trim underneath the tread where the riser and tread meet.

**False Tread:** a tread cap which is either left or right handed and fits over a false tread. Carpet is run between the tread caps.

**Filler:** used to fill the plow between the balusters in shoe rail and plowed handrails.

**Half Newel:** used on the wall when ending a run of handrail.

**JA Bracket:** mounting kit used to secure newel post to the floor. This eliminated the need for cutting out subfloor, etc.

**Kneewall:** when a wall is constructed on the staircase so that the treads do not overhang the wall.

**Landing Tread:** used on balcony areas to place balusters on.

**Level Quarterturn:** used without a newel to make a 90 degree turn on balconies.

**Newel Post:** supports a handrail at the bottom or top of a staircase. Newel posts are used on balcony areas also when a rise of handrail changes.

**Over the Post:** handrail runs over newel posts with use of handrail fittings.

**Post to Post:** handrail runs between newel posts.

**Quarterturn with Cap:** this fitting is used as an over the post handrail system when capping a newel on a balcony area at a 90-degree junction.

**Returned End:** fitting used at the end of a wall rail to give it a profiled end.

**Returned Tread:** a tread which overhangs the wall on one or both sides.

**Riser:** the vertical part of a step.

**Rosette:** used on the wall at the ending of a run of handrail.

**Shoe Rail:** used with balusters on kneewall stairs and on level balconies.

**Starting Easing with Cap:** an over the post system which does not require a starting step.

**Tandem Cap:** allows for additional newels to be inserted into a long level stretch of rail for strength.

**Tread:** the horizontal part of a step.

**Turnout:** used on the first step of a staircase in an over the post system.

**Upspearing:** used when changing the elevation of the handrail.

**Volute:** an over the post system which requires a starting step and a volute newel.

## Stair Systems

The **Stair Body** consists of treads, risers and stringers, which may be combined as an open stairway in which the treads and risers are exposed from a side view, or a closed stairway which encloses the treads and risers with a stringer.

The **Balustrade System** includes newel posts, balusters and rails which are combined as a post-to-post system or an over-the post system.

A **Post-to-Post system** is built with the rail cut to lengths which fit between the newel posts.

An **Over-the-Post system** is built with the rail placed on top of the newel posts as a continuous length.

At Interior Trim & Supply, we have the expertise to help you plan the best stairway for your needs and choose the stair parts needed for the installation.